



# The Voyageur's Companion

NEWSLETTER OF THE ROCKY MOUNTAIN CANOE CLUB

March 2005

## Year 2005 Off to a Great Start

Justin Gilbert, President

Well with two of the three meetings down, the year is off to a great start. After a few glitches with the audio video equipment the January meeting went well. It was wonderful to see all those that were present. It was equally nice to see a handful of new members for their first and second meeting. Thank you Bob and Jill Stecker for your videos of beautiful northern Canada and your wild ride down Cataract canyon! Thanks also to Karen Jankowski for the DVD of the San Juan. Major topics of discussion were; river permits, canoe smorgasbord, club brochure, and membership recruitment.

I must say this weather here in the Front Range has been quite the tease lately. My mind can't help but drift to thoughts of paddling and camping beneath the stars of these breathtaking western desert canyons. As well as, the exhilarating western white-water, that I can't seem to get enough of!

On the topic of weather, here is a quick update on the snow pack. Statewide totals are averaging above 100%. This is promising but not exceptional. Think snow, equals H<sub>2</sub>O.

Canoe smorgasbord, Wow what a success! Thanks to the organizers Jeff Oxenford and Bob Stecker. Not to forget those who participated in the demos. Thank you all. Numerous club members showed up with their boats along with Eric Nyre of Canoe Colorado. The boats numbered upwards of 25. All designs from; a classic handmade

freestyle, various white-water and slalom, tripping and recreational, and several decked C-1's, were present. Maybe just maybe we can continue this type of event for years to come.

Looking forward there are a few non-RMCC events worthy of checking out. On May

29th, The Mountain Shop of Fort Collins is hosting the Northern Colorado Canoe and Kayak Demo Day. With demo boats from Wenonah, Mad River, Current Designs, and Wilderness Systems, this sounds like a wonderful opportunity to expose oneself to an array of boats. The time and place are yet undetermined, contact The Mountain Shop for further details. Secondly, REI is holding their paddle demo days in conjunction with Camp REI at Chatfield State Park on June 11th. REI is still working out the specific details for time and location. Look to their website or contact them for details.

In the spirit of RMCC club tradition we are looking forward to the 3rd annual RMCC Meet and Greet and the Summer

Mid Winter Newsletter

### In This Issue:

Instruction descriptions . . . . .	2
Big Bend trip report . . . . .	3
Esquif, a winner . . . . .	4
Smorgsbord at Pool . . . . .	5
RMCC Founding . . . . .	5
Instruction registration form . . . . .	6
Conservation report . . . . .	7
2005 Trip Schedule . . . . .	9
RMCC Officers . . . . .	9

Plan ahead . . . . .

**November 6  
RMCC meeting  
potluck, slides, videos  
ELECTIONS**

**REI Flagship Store -  
downtown**

### What Canoe is this?

See page 5 for answer!



Keep in touch with RMCC on the  
WEB at

[rockymountaincanoecub.org](http://rockymountaincanoecub.org)

Trip Schedules  
News & Information  
Pictures  
Training  
Schedule **Your** Trip

Continued, page 2



## DESCRIPTION of CLASSES

Classes are taught by ACA Certified Instructors. All classes teach different skill levels; students may repeat last year's class at a higher skill level if desired. Private instruction is also available, for individuals or small groups. Head Instructors: Bob & Jill Stecker and Jeff Oxenford.

\*\*\* Register early. These classes fill up. We take registrations on a first come first serve basis \*\*\*

**1. ESSENTIALS of River Canoeing (16 hrs). May 14-15, 2005.** Instructor: Jeff Oxenford

For beginners through low intermediate, solo and tandem. The first day will be on a lake in Denver; the second day on moving water. Paddlers are divided into groups based on skill level. This class emphasizes beginning strokes, basic river running technique, with discussions about gear, safety, river etiquette, etc. Required equipment: canoe, paddle, life jacket, and helmet. A kneeling setup with glued-down foam pads is strongly recommended.

**2. WHITEWATER Canoeing (16 hrs). May 21-22, 2005.** Instructors: Bob & Jill Stecker

For novice through low intermediate, solo and tandem. Prerequisite: the BASICS class or equivalent. We will be paddling Class II+ water on both Saturday and Sunday. Emphasis is on eddy turns, peelouts, forward ferries, front surfing, and reading the water. Required equipment: canoe, life jacket, helmet, and kneeling setup. Thigh straps are strongly recommended.

Presidents' message  
Continued, from page 1

Rendezvous!!! The Meet and Greet will be on Saturday May 7th. This beginner paddle, class I+, will take place on the Colorado River from Dotsero to Hanging Lake through the picturesque Glenwood Canyon. Post trip we will grill for lunch at the take out so bring a dish to pass. Hope to see you there! The Summer Rendezvous is shaping up for the 3rd weekend in July. The 22nd, 23rd, and 24th, Friday through Sunday. We are still in the planning stages, so look for future announcements soon. On April 16th we will meet at the Soda Lakes near Morrison for a lake paddle to get comfortable in our boats in case there are some of us who haven't been in them since last year. With the assistance of Eric Nyre of Canoe Colorado we will show new paddlers how to set up their boats for flotation bags. Then on Sunday the 17th there will be a trip on the South Platte from Brighton to Fort Lupton. A class I float about 9 miles in length. Also, on the 14th of May, Bonnie Gallagher is organizing a day paddle on the Filter Plant section of the Poudre River. This section is a great place to enter into class II water. Flotation bags are required for these trips to help prevent any mishaps involving a canoe taking the shape of a taco!

*Don't forget. always lean downstream!*

**PRIVATE INSTRUCTION.** Instructors: Bob & Jill Stecker  
and Jeff Oxenford

Private or group instruction is available if you cannot make the above schedule for the BASICS or WHITEWATER classes. Contact us individually for instruction fees. We also provide private instruction for specialty canoe classes. Examples below:

**Advanced Whitewater:** a step above the RMCC weekend whitewater class, tandem or solo. Instruction is geared to the student's skill level. Whitewater drills are demonstrated to facilitate on-your-own skill development. If desired, slalom racing techniques can be emphasized. Evening instruction or weekday afternoon classes are encouraged.

**Freestyle Instruction:** This class emphasizes doing fun and challenging things on flatwater using ACA Freestyle and Canadian "Style" paddling techniques. You will need a Sport solo canoe or a suitable tandem canoe that you would like to paddle solo (i.e., Canadian style, heeled to the rail and paddled from the on-side). Your canoe may work fine (inquire) or we can provide high-performance Sport canoes for a modest fee. Morning classes are encouraged to minimize wind problems. Contact Bob & Jill Stecker.

**Kids Canoeing.** The kids canoeing for ages 8 and up will start again in June. With a focus on having fun, basic techniques are taught on Golden pond. More advanced students can try out their skill on Clear Creek. . Classes will be held in Golden on Wednesday nights from 6:00 – 7:00 p.m. For more information contact Jeff Oxenford at



# Big Bend Trip – Thanksgiving, 2004

## Highlights and Lessons Learned

By Karen Amundson

The Upper stretches of the Rio Grande starting in Big Bend Ranch State Park and ending in Big Bend National Park travel 44 lovely miles through the Colorado and Santa Elena Canyons. Trip members included Greg Jankowski, Dee Bolton, Paul Holscher, his 2 adult sons – Tim and Franz, his sister Marianne Lorenz, and me. Let me start with some of the highlights, and finish with a few lessons learned that could apply to many trips – especially long, late season excursions.

It is nice to break up the lengthy 900+ mile drive with a few interesting stops. Dee and I had good experiences with the Desert Museum State Park by Carlsbad, Chinati Hot Springs, Ft. Davis-TX, and Guadalupe National Park. We saved Carlsbad Caverns for next time. Greg clued us in to the Chinati Hot Springs, which are just 50 miles from our put-in; see [www.chinatihotsprings.org](http://www.chinatihotsprings.org). They have cabins and camping and several hot tubs at the perfect temperature. Getting there was an adventure and required a number of stream and lake crossings as much as 19" deep (bottom of the CRV license plate) due to lots of recent rain.

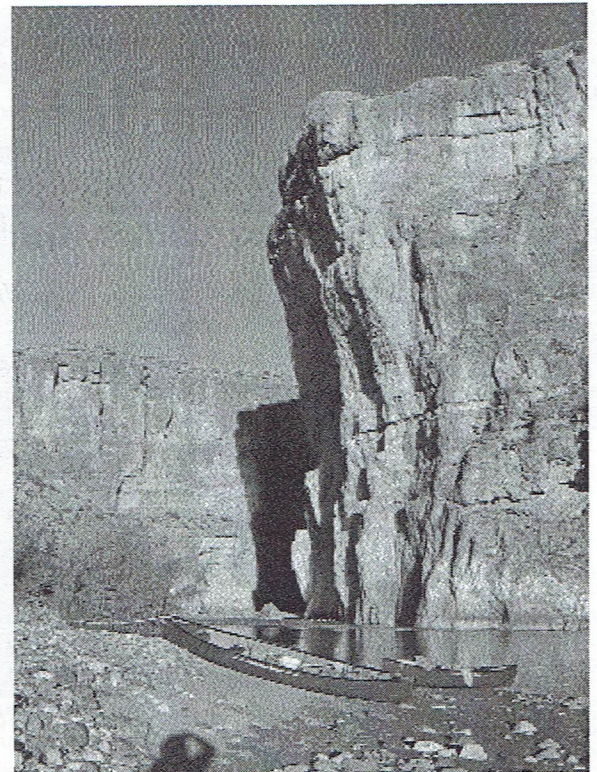
The river was running 6 to 7 feet deep the entire trip – instead of the usual 1.5 to 3 foot depth at Thanksgiving. This cut down on the bamboozle factor (narrow channels forcing you into the bamboo-like growth along some banks), but made many of the rapids more difficult, or at least different. We did have highs of about 70 degrees every day except one.

We were favorably impressed with campsites at the Ledge Rock Rapid (Mexican side), and at the entry to Santa Elena

Canyon (Texas side). Bobcat tracks were spotted where we put a tent near Santa Elena, and additional tracks were there the next morning. The "Lonesome Dove" movie set was a fun lunch stop. The shuttle lady says it is no longer (since 911 and heavier border restrictions) fun to visit the Mexican settlement near Lajitas.

We had a great Thanksgiving dinner consisting of turkey, dressing, mashed potatoes, cranberry-orange sauce, stuffed squash, fruit salad, pecan tassies, and cheesecake – surprisingly good from a pudding box if you bring the graham cracker crusts; and red and white wine. The trick to the turkey and dressing was to make it ahead of time, put it in several bags and freeze it. Then it will act like the ice in your cooler and be thawed about the time that you want it (on the 6th day after leaving Denver in this case).

We hiked up to the top of the Texas side overlooking Santa Elena canyon. Great views, interesting vegetation, a natural arch and a tarantula were the highlights. The limestone and calcite made for interesting rock hounding, including desert-rose-like specimens. Two other areas also provide good hikes from this campsite. Sentinel Rock in Mexico can be accessed when the river is lower.



**Entrance to Santa Elena Canyon**

Santa Elena Canyon itself is beautiful, and very cool and shady due to the 2000' vertical walls. The Rock Slide Rapid is like a 300 yard long maze of thin channels between car-and-truck-sized boulders. We didn't have time to explore the few side canyons that you can actually access. The take-out is a mile after the canyon ends and has been improved so that you can drive fairly close to the gear.

Here are several things that we learned on this trip that will help to remind everyone of what they should avoid or improve:

Know that this initial shuttle can take 5 hours, and plan accordingly.

Don't take an untested boat – especially a rodeo kayak – on a long river trip

Don't overload your boats – 3 people's gear and a reluctant dog (Sadie) in a tandem canoe paddled by 1 person is pushing the limit on a 6 day trip with high water levels

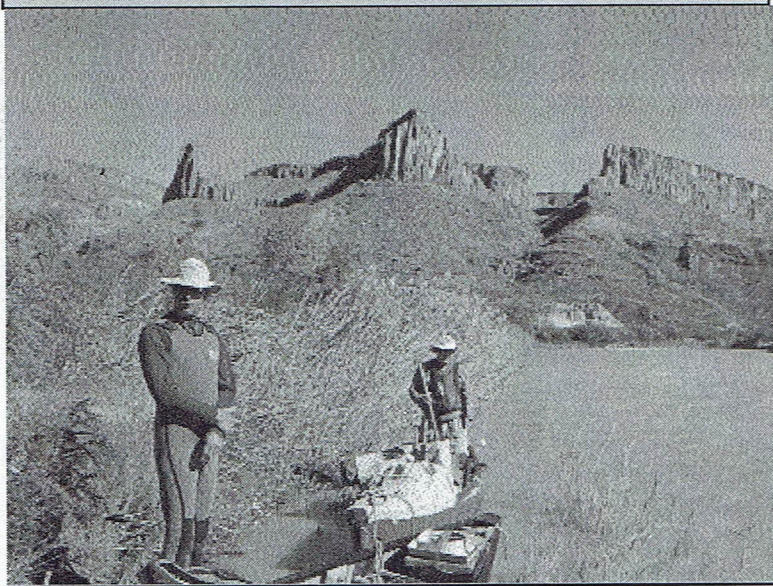
Know that the parks' rules have recently changed and dogs are no longer allowed

### **High waves of Panther Rapid with Paul Holscher**





## Big Bend, Continued



**Greg Jankowski and Paul Holscher near Lonesome Dove movie set!**

While Sadie had a PDF (Marianne had trouble with this acronym), she was still afraid of water and would take any chance to jump to the bank and hide; Paul may ban Sadie from future trips

Do not throw a dog's frisbee into the river; losing it causes serious dog depression; we are lucky to have found it the next morning where it had floated downstream and was snagged by a bush

Keep a safe distance away from the javelinas and any other nasty-natured animals

Always have good waterproof clothing along, and wear it if it's rainy or you are prone to flipping; we had to spend a night on a muddy bank near barbed-wire and 2 roosters because a person got hypothermia

Always scout the Rock Slide Rapid; don't let the person involved in 2) and 8) flip at the top and send everyone scurrying to rescue the person and his gear

Do not try to ferry a stranded kayaker from Texas to Mexico on top of your cooler; this is likely to result in 3 people swimming

Ensure that every boat has a throw rope, and carry it with you when debarking if a rescue situation is probable.

If 3 of you are 4' deep behind a rock in the middle of the river, avoid a lengthy debate about whether a canoe should be turned right side up; of course it must be flipped, bailed and re-boarded

When towing a dead weight (kayaker with a fearful kick) at the end of your painter, don't do any fancy strokes like a draw. Know that the straight line from the towee to your stern continues to the bow. Your best bet is to paddle forward vigorously. We did finally get him to the Mexican bank where he scaled huge boulders to avoid swimming the long rapid.

All in all, it was a great trip and worth the drive to be in a beautiful sonoran desert setting eating a turkey feast with some fun people. I would do it again, and it has whet my appetite to see the lower canyons as well.

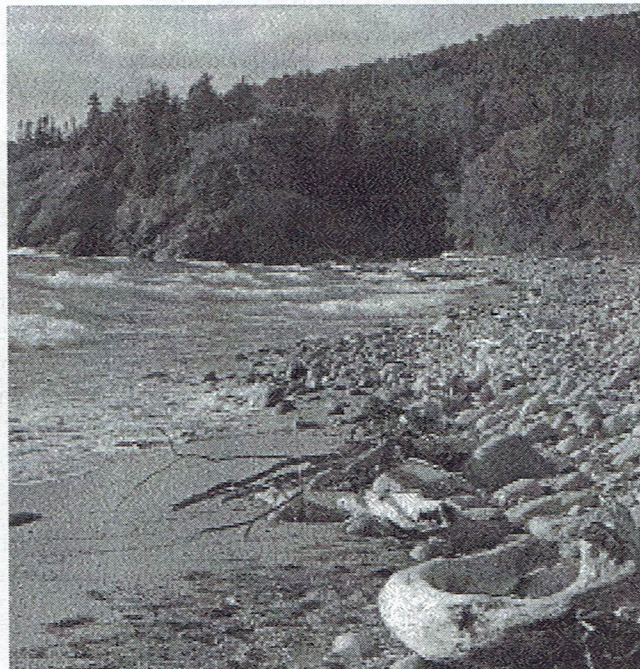
## Esquif & Millbrook Boats - The Spark

*submitted by Andrew Westwood  
photo (on Page 1) by Jill Stecker*

The 2004 Open Canoe Nationals marked the introduction of a new recreational ABS canoe from Esquif. The Spark instantly became the "hot" boat to navigate through the gates on the Blackfoot River. Everyone who tried the this new solo boat had favorable comments about their initial impressions, and many claimed that this may very well be their next solo boat purchase.

Based on Millbrook Boats designer John Kazimierczyk's 13' 2" kevlar Ignitor, the new Spark is a shorter version made of Royalite measuring 11' 8". The canoe travels fast, turns tight through the gates and is dry even at full speed through large waves. "Kaz" remarked "it feels great, it does everything the Ignitor does". John handily won the recreational solo class paddling the Spark and the same canoe was paddled for second and third place in this event. The Spark is a "cab forward" design that gives the canoe the appearance of more volume toward the bow. The boat responds instantly to bow corrections and can be driven very quickly with forward and X-forward strokes. The firm initial stability inspires confidence to commit to powerful strokes even on the off side. Gentle tilts are all that is necessary to assist tight turns through gates with a beautiful carving arc with little loss of speed. The Royalite construction with ultralite wood trim results in the Spark weighing in at just 33 lbs. Esquif's own outfitting uses knee and thigh straps and a pedestal seat. The Spark was well received in its visually unique mute green camouflage hull accented by the ash trim.

At the 2004 Nationals, the Esquif Spark was a winner!







**Stecker and Oxenford, RMCC Instructors, working two of the dishes at the Smorgasbord.**

*by Bob Cook*

## RMCC Canoe Smorgasbord

*By Jeff Oxenford*

It's snowing and again I'm loading my canoes. My neighbor gives me one of those, your nuts looks as I head off to the Canoe Smorgasbord luckily inside at Meyers pool.

40 people gather at Meyers pool on January 30th for the Rocky Mountain Canoe Club's (RMCC) Canoe Smorgasbord. The event was a true smorgasbord, giving participants a taste of different styles and techniques for canoeing. Diversity in canoeing was a major theme of the event. Paddlers tend to cast sideways glances at those from different styles of paddling. This event exposed paddlers to the different styles and as in life from knowledge comes a greater appreciation and understanding.

Canoeing disciplines discussed included general recreation, touring, whitewater, freestyle, and even decked C-1 slalom racing. Participants had the opportunity to test some of the 30 canoes on hand and interact with the club's top instructors.

Coming from a whitewater background, I had my first chance to paddle a downriver racing boat. I was amazed with the speed of the boat (in the few strokes I could take

before reaching the other side of the pool). Of course in the eternity it took me to turn around I really missed my whitewater boat. Bob Stecker, gave an amazingly graceful demonstration of freestyle paddling. Jaws dropped as Bob casually carried on a conversation as his boat spun with the gunnel resting on the water. In contrast to the grace of a freestyle, Nic Borst (an internationally ranked slalom racer) demonstrated stern pivots in a race C-1, and Eric Nyre and Hugh O'Neil zipped across the pool in a flatwater racing canoeing doing the Minnesota Two.

A lot of fun was had when Doug Hurcomb and Paul Sobiech showed what not to do. Paddling a recreation boat with gear loose in their boat they flipped over and demonstrated the yard sale effect. They were rescued by Bill Rivers and Al Johnson performing a boat over boat rescue. Then they proceeded to flip over numerous times to demonstrate other rescue methods and ways of getting in and out of the boat. How not to get into this situation was demonstrated by Alan Wittern and Bob Cook as they showed how to brace and roll a canoe.

At the end of the event a guide from a local canoe company wrapped it up best by stating that he was amazed that there was such a world of canoeing and was glad to recognize that a resource like the club existed.

## RMCC -Founding and Early History

*Jeff Keeler, Founding member*

The Rocky Mountain Canoe Club is 30 years old in March! Where were you on March 23, 1975? That was the date of the first RMCC meeting – the Founding Meeting that gave the club its name, its mission, and planned its first trip.

Let me back up a bit. About a week earlier I had been reading the Boulder Daily Camera and noted a small article inviting anyone interested in starting a canoe club to the National Bureau of Standards (now NIST) meeting room on March 23. I had purchased my 15' Grumman with a shoe keel a couple years earlier and had paddled in Boulder Creek, the South Platte, and the Colorado, Dolores, and North Platte Rivers with the CU Rafting Outdoor Program. So I was keen to meet up with other canoeists and paddle some real rivers using the white water skills I had learned a few years earlier on the Lehigh River in Pennsylvania.

The first RMCC meeting had about a dozen folks there – mostly couples from Longmont who preferred fishing trips and knew the meeting organizer, Bob Mumford, a Longmont developer who also wanted to get on the water. A few others at the meeting were looking for river experience, not necessarily fishing or

...previous page....

**Lake Superior**

**by Justin Gilbert**

*Look for details of his trip in the next Voyageur's Companion*

Founding - Continued Page 8



Register me for the  
following classes:

Class Dates

Deadline for  
registration\*Cost per boat  
tandem soloAmount  
enclosed

G ESSENTIALS of River Canoeing (16 hrs)	May 14-15	April 29	\$90	\$65	_____
G WHITEWATER Canoeing (16 hrs)	May 21-22	May 7	\$90	\$65	_____

Locations to be announced (Private instruction available on request. See note below\* or the RMCC DESCRIPTION of CLASSES).

Note: a \$6.00/person insurance fee for each class must be added if you are not an ACA (Am. Canoe Assoc.) member. Membership is \$30/person. An RMCC member's ACA membership is \$20/person or \$25/family). If registering on-line, please download **ACA Waiver**, sign and return it.

Non-member ACA Insurance fees: \_\_\_\_\_  
(\$6 / person)  
(One class) Total = \_\_\_\_\_

Please send ONE registration form and ONE payment check per class.

Name \_\_\_\_\_ Tandem partner's name(if applicable) \_\_\_\_\_

Address: \_\_\_\_\_ City/zip \_\_\_\_\_

Phone: (h) \_\_\_\_\_ (w) \_\_\_\_\_ fax \_\_\_\_\_ e-mail \_\_\_\_\_

I will be canoeing: Solo \_\_\_\_\_ Tandem \_\_\_\_\_ Skill level (see Evaluation below): \_\_\_\_\_

If you are under 18 years old, your age \_\_\_\_\_. If you are an ACA member, your ACA #: \_\_\_\_\_

Do you have any physical disability or medical problem we need to be aware of? No \_\_\_\_; Yes \_\_\_\_ Explain: \_\_\_\_\_

\*Fees: **Due 2 wks. before class. !! Classes will be canceled if less than five students are signed up by the Deadline for Registration (see above) !!** (Private instruction is always available; contact the instructors). Send this application to the appropriate instructor and address listed below. Make checks payable to the instructor of the class:

Instructors:

ESSENTIALS -- Jeff Oxenford

WHITEWATER -- Bob &amp; Jill Stecker

When payment is received you will be notified that you are enrolled and given all necessary materials (you will be contacted if there are changes in schedule or location). You must have your own canoeing equipment, and you will need to **sign a waiver**.

**Self Evaluation:** Please complete the following, blackening all appropriate circles. A blackened circle means you can execute the maneuver with proficiency. (Tandem couples: each should rate their preferred bow/stern location).

High Intermediate Skill Level:

	solo	bow	stern
Consistent eddy turns on Class III water	<input type="radio"/>	<input type="radio"/>	<input type="radio"/>
Back ferry using reverse J and reverse sweep	<input type="radio"/>	<input type="radio"/>	n/a
Effective onside and offside duffeks (with pronounced leans)	<input type="radio"/>	<input type="radio"/>	n/a
Low brace (as a knee-jerk reaction)	<input type="radio"/>	<input type="radio"/>	<input type="radio"/>

Low Intermediate Skill Level:

Consistent eddy turns on Class II water	<input type="radio"/>	<input type="radio"/>	<input type="radio"/>
Effective "pop pry"	<input type="radio"/>	n/a	<input type="radio"/>
Sculling draw (lateral and diagonal movement)	<input type="radio"/>	<input type="radio"/>	<input type="radio"/>
Forward ferry in moderate current	<input type="radio"/>	<input type="radio"/>	<input type="radio"/>

Novice Skill Level:

High and low brace on Class I water	<input type="radio"/>	<input type="radio"/>	<input type="radio"/>
Draw, cross bow draw, sweep, on Class I water	<input type="radio"/>	<input type="radio"/>	<input type="radio"/>
Forward stroke with correction	<input type="radio"/>	n/a	<input type="radio"/>

Check this box if you are a **BEGINNER** G

Please note your check will be returned if the class has to be canceled



# "Life on a Twist of the Paddle"

Doug Green,  
RMCC Conservation

**Three topics. One:** Colorado State Senate Bill 62, the "anti-paddling bill" which places limits on Recreational In-Channel Diversions (RICD's, the release of water specifically for recreation), passed the full Colorado Senate on Feb.28. All of the Republican Senators voted for it, and only two Democratic Senators joined them (Isgar and Takis; we have 35 State Senators: 18 Democrats and 17 Republicans). The bill goes to the State House subcommittee next. A large coalition of interested parties, public, private (including the RMCC), and civic, are opposed to this bill. As introduced in committee, it was blatantly, mean-spiritedly, anti-recreational-paddling. After much protest, the worst of the language was removed or changed, but it is still a bad bill for those of us who paddle, for the following reasons:

- it greatly diminishes (but does not eliminate) the rights, ability, and economic incentive of communities (and counties) to seek RICD's to build new water parks for paddling. This is a huge potential economic loss to many communities who have rivers that could sustain a future water park: Golden estimates the value of its water park at well over a million dollars annually to its local economy.

- it does eliminate other valid recreational uses, such as fishing, swimming, wading, or just having a nice gurgle to sit or walk beside. It strictly defines RICD: "means kayaking, canoeing, inner tubing, boating, and rafting." All other water-based recreation is deemed invalid.

- the original, current law defines a valid RICD as the "minimum stream flow [required] for a reasonable recreation experience". The new bill changes that to the minimum required to float a kayak, canoe, innertube, etc.

- it places an arbitrary high-end limit of 350 cfs on any future RICD, for any community, anywhere in Colorado. Well, 350

cfs would be fantastic at Lyons, fun at Golden, and a very, very long portage on the Arkansas. It's an impractical, grossly arbitrary limit.

- it creates a whole new definition of "control structure" specifically applied to RICD water rights Existing structures are grandfathered, but any town that wants to build a new park will find its construction requirements to be grossly overbuilt and expensive, a real deterrent.

These are the highlights, there's more, but I'm out of space. Email me if you want more.

**Two: The RAT** -- the Recreational Access Tax -- which used to be called the Fee Demo Program, is being worked on. Legislation defeating it will be introduced this session. Stay tuned.

**Three: The Escalante** might run this year! Hoorah!

## Raft Trips!



**BOC**  
**BOULDER OUTDOOR CENTER**

**Sweepstakes! Free gear every two weeks!**

No purchase necessary. Enter every two weeks for a new drawing! You can enter our drawing on our web site or by coming into our store.

Over 70 Discounted Raft Trips!  
Spread the word! Sign-up online

## Water Sports

Canoes Kayaks Rafts

Surf Boards & Clothing

**Colorado's Surf Shop!**

Sales Rentals Instruction

[www.BOC123.com](http://www.BOC123.com)

2707 Spruce St. Boulder

**303-444-8420**

All your boating gear  
At the best price!  
Everything you need,  
we have it!

**Kayak Instruction and our awesome kids kayak programs.**



**Surf Wear!**



**Canoes!**



## RMCC Founding - Continued

whitewater, but just people to go canoeing with. Besides myself, Bob McLaughlin and Bruce/Jeanne Waters attended. We wanted to go canoeing and had boats but needed a group for shuttles and paddling.

The strange discussion that occurred at this first meeting was the enthusiasm for a fishing trip in canoes on the Dolores River between Cahone or Slick Rock and Bedrock! No one had scouted the river, just looked at access from a road map. Any of you that have done this stretch know the "River of Sorrows" isn't called that because of the fishing! I had rafted the Dolores 2 years earlier and knew that Snaggle Tooth Rapid wasn't what these folks had in mind for a long weekend fishing trip. After a little discussion the group realized that a milder **St. Vrain River trip** near Platteville on a sunny Sunday May 4th afternoon was likely to preserve these RMCC founders for trips in the decades to come. I have the **original trip map** that

Bob Mumford put together and it is shown below.

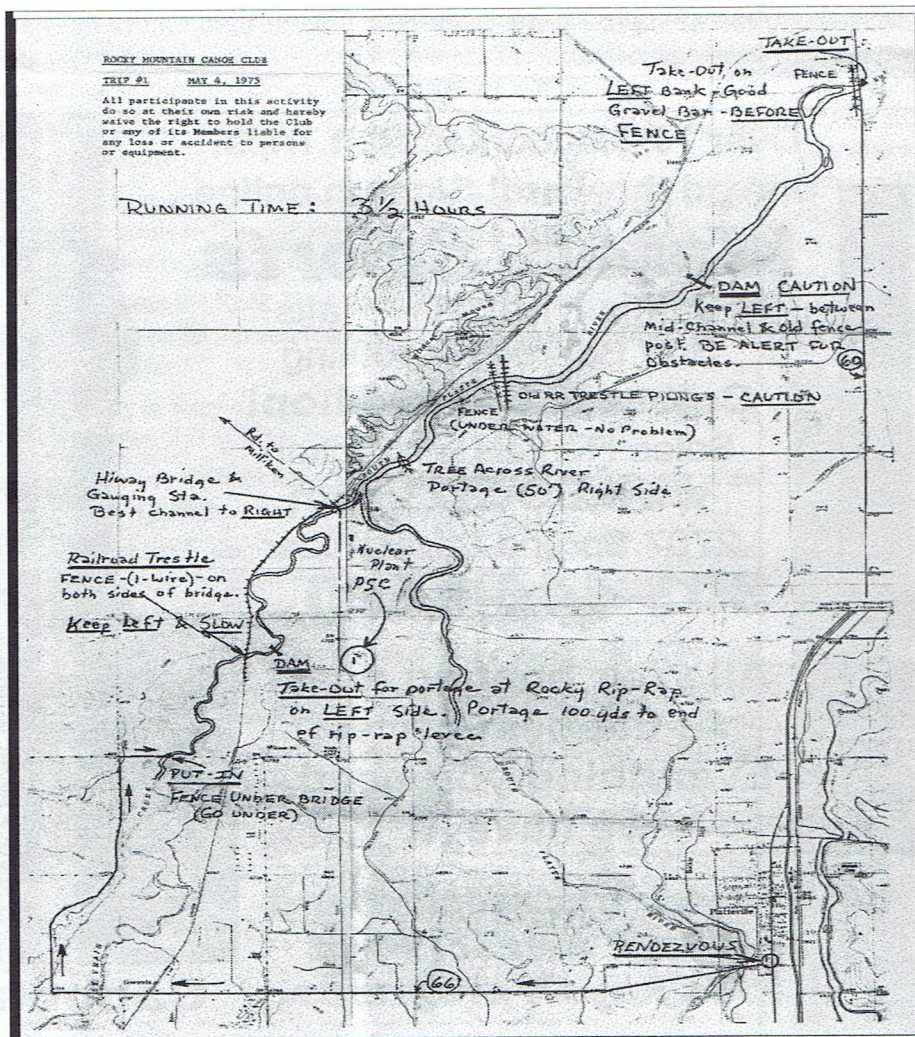
We all had aluminum boats, mostly Grumman 17' rock scrapers that worked just fine. Mine is still around to this day but now owned by John and Kathy Mullen. Bob and Linda McLaughlin still paddle theirs, but I believe a river ate Bruce and Jeanne Waters' a few years later. The other folks on the trip seem to have moved on and I don't have a trip roster. We didn't consider liability waivers or even membership at that point.

After that first very successful and enjoyable trip, we arranged several more informal trips by sending out notices once a month with real trip leaders much as we do today. The RMCC was off to a roaring start. The enthusiasm for new trips continued to grow. We read whatever we could find about Colorado rivers, discovered places that we'd never heard about, made lots of new friends and learned all sorts of new paddling techniques from each other.

That fall we elected officers for the 1976

season. I was nominated for first president, but declined so I could finish my CU degree. We elected Bob McLaughlin as first RMCC President, Jeanne Waters as first RMCC Secretary, Don Walker as first RMCC "Program Chairman" in charge of meeting planning, and I was the first RMCC Trip Planning and Leader Coordinator. Our dues were \$3.00/year and we made posters to put up in local boating and mountaineering shops. We wrote a "mission statement" that describes the typical boating season, trip leaders, training opportunities, and the year-end slide show. I would get calls from both locals and visitors wondering how to go canoeing in Colorado when all they see is Clear Creek Canyon. Many joined the RMCC and have made it the success it is today – we know them as the "old timers".

Although in the last 30 years the equipment has changed a lot and we have members that routinely paddle whitewater much more extreme than what we did those first few years, the RMCC has remained remarkably close to its root principles and goals – to offer open canoeing trips, training, and camaraderie. We soon got into environmental issues, a real newsletter, our present logo, and all the other aspects and traditions that we love today. Thirty years ago was a great time to go canoeing and it still is today!



## Canoe Available

Modified Ocoee - \$300 - Outfitted and modified by John Graye. For the more experienced paddler, approximately one foot was removed from the canoe to enhance it's playboat characteristics. Contact Jeff Oxenford

## Dolores River - latest information

Flows below the McPhee dam  
1-800-276-4828  
Dolores Water Conservancy District  
information (970) 565-7562

More 2005 river information  
[www.co.blm.gov/sjra/sjdolores](http://www.co.blm.gov/sjra/sjdolores)



## RMCC TRIP SCHEDULE 2005

RMCC trips are cooperative adventures shared by members and their guests. The entire group is collectively responsible for the trip, and each participant is individually responsible for judging his/her own qualifications, skill level, and safety on the river being run. The trip coordinator may refuse to allow a participant on a trip, but the responsibility for judging one's own qualifications lies solely with each trip member. Trips are open only to RMCC members and their guests. All trip participants must sign the RMCC Waiver and Assignment of Risk agreement prior to each trip.

Date	Trip Location	Coordinator	Phone	Level	Description
Mar 19	S. Platte Evans to Kuner	Dave Allured		I	Joint paddle with other clubs.
Apr 3-9	San Juan Sand Is to Clay Hills	Jim Baker-Jarvis		II	Cold water, chance of snow.
Apr 15-17	Gunnison R. Escalante to Whitewater	Dave Allured		I-II	Beginners OK. 2-day option.
Apr 30-May 1	Colorado Hittle Bottom to Big Bend	Rich Elten		II-III	15 mile day trip; repeat on second day
May 3-4	Colorado Hittle Bottom to Big Bend	Rich Elten		II-III	15 mile week-day trip. repeat on day 2
May 14	Poudre R. Filter Plant	Bonnie Gallagher		II+	Fun technical run on front range
May 14-15	Training	Jeff Oxenford			Basic techniques for river canoeing
May 21-22	Training	Bob/Jill Stecker			Intermediate whitewater techniques
Mid-late May	Dolores R. Bradford Bridge	Rich Elten		III	Depends on water release from dam. 19 mile day trip
Mid-late May	Dolores R. Slickrock to Bedrock	Rich Elten		III-	Depends on water release from dam. 50 miles, 4 days, camping
June 10-12	N. Platte	Ken Bauer		II+	Wilderness camping, 3 days

**Be sure to call the Trip Coordinator early to sign up!**

**Visit RMCC Web site to see the latest in Scheduled Trips**

## Rocky Mountain Canoe Club 2005 Officers

### Co-Presidents

Bonnie Gallagher .....

Justin Gilbert .....

### Treasurer and Membership

Paul Holscher .....

### Newsletter

Lyn Berry .....

### Web Master

Dave Allured .....

### Advertising

Doug Hurcomb .....

### Instruction -ACA instructors

Bob & Jill Stecker .....

Jeff Oxenford .....

### Trip Planning Coordinator

Karen Amundson .....

### Conservation

Doug Green .....



The Editor of the *Voyageur's Companion* now desires to *Retire!* He plans to finish the early summer issue (May or June) but then will be travelling out-of-state and out-of-country. Starting with the Late Summer (August) issue, who would like to continue as the Editor of the *Voyageur's Companion*? Submit desire and resume to Bonnie Gallagher (RMCC President) and/or Lyn Berry (current Editor).

**Deadline for a next issue is May 11. Get it to me, See it in print.**



## Figure Eight Knot

With variations on this versatile knot, you can make a hand or waist loop, join two ropes, or create attachment points on a hauling line or Z drag. While any knot weakens a rope, the figure eight reduces a line's stress more than any other. It is easily untied, even after being pulled very tight.

The basic knot, used as a "stopper" in rescue bags, is really an overhand knot with an extra twist.

Create a loop in the line, then take the free end around the standing part of the rope and up through the loop. Pull until snug.

### RMCC Membership:

\$20.00 per Household per Year.

Contact Paul Holscher

Mail applications to:



**Plan now for  
canoe training; and  
2005 canoe trips!**



Newsletter of the *Rocky Mountain Canoe Club*, an *American Canoe Association Paddle America* partner.

## The Voyageur's Companion

C/O Editor

Buena Vista Colorado